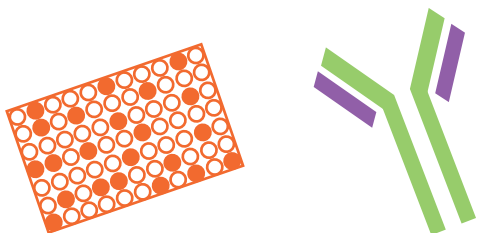


Who is Lunginnov ?

Lunginnov is today a well-recognized manufacturer of high-quality and **cost-effective** monoclonal antibodies, recombinant proteins and immunoassays for a wide range of research and development applications.

We provide our **innovative tools** to study endothelial dysfunctions in diseases when endothelium gets challenged (sepsis, cancers, obesity, dengue fever, inflammatory diseases, etc.).



What is Endocan / ESM-1 ?

Endocan also called ESM-1 (endothelial cell specific molecule 1) was originally discovered as a product of endothelial cells from the lung.

Structurally, **Endocan / ESM-1 is a circulating proteoglycan** of 50 kDa, highly regulated by vascular endothelial growth factor or by tumor necrosis factor alpha. No other molecule is currently known to be a read out of endothelial activation and dysfunction.

Therefore, Endocan appears as a **unique biomarker** of neoangiogenesis and of vascular remodeling in diseases.

How to buy ?

By fax: (33) 320 877 884

By e-mail: commercial@lunginnov.com

By courier:

LUNGINNOV SAS
Campus de l'Institut Pasteur de Lille
1 rue du Pr Calmette
59000 Lille
FRANCE

Online: www.lunginnov.com

Our distributors:

Please visit our website for the complete list of our distributors present all around the world

Informations

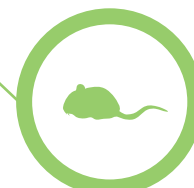
Reagents for animal studies are for **Research Use Only** and are not intended for Diagnostic or Therapeutic Use.

All our innovative products are manufactured in France.

All our tools to study endothelial dysfunctions have been validated by peer-reviewed publications since 2001.



Discover Our Range of Products for Animal Studies





Our Monoclonal Antibodies

| Reference | Clone | Reactivity |
|-----------|--------|---------------------------|
| LIA-0901 | MEP08 | Chicken, Monkey |
| LIA-1001 | MEP14 | Chicken, Monkey, Rat, Pig |
| LIA-0905 | GGR222 | Mouse, Rat |
| LIA-1101 | GGR237 | Mouse, Rat |

Lunginnov's antibodies are monoclonal antibodies that have been purified by immunoaffinity chromatography. They are rigorously tested to provide our customers with high quality products.



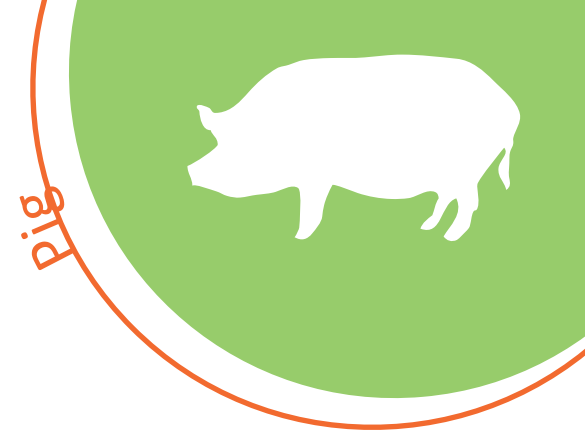
Endocan / ESM-1 as pertinent biomarker of endothelial dysfunctions

At Lunginnov, we offer unique tools to study mouse, rat, monkey, chicken or pig Endocan as pertinent biomarker of endothelial dysfunctions.

Our Recombinant Proteins

| Reference | Clone | Application |
|-----------------|-------------------------|-------------|
| LIP-1003 10U | Mouse Endocan 50 kDa | Bioassay/WB |
| LIP-1003 50U | Mouse Endocan 50 kDa | Bioassay/WB |
| LIP-1102 10U | Mouse Endocan 20 kDa | Bioassay/WB |
| LIP-1102 50U | Mouse Endocan 20 kDa | Bioassay/WB |

To discover all our new products, please visit our website : www.lunginnov.com



Our ELISA Kits

| Reference | Clone | Reactivity |
|-----------|----------|------------|
| LIK-1102 | DIYEK M1 | Mouse |
| LIK-1103 | DIYEK R1 | Rat |

The DIYEK «Do It Yourself» ELISA Kit (LIK-1101) is a development kit that contains the key components to realize two ELISA plates (meaning that you can run 88 samples in duplicate). The DIYEK formats are intended for experienced ELISA users.

